

LONG-TERM CARE FACILITY



OVERVIEW

Muslim Welfare Canada (MWC) is launching a transformative **Long-Term Care (LTC)** project in the Durham Region. This initiative will address the urgent need for culturally sensitive long-term care. It will provide a nurturing environment for seniors, **reflecting our commitment to serving vulnerable communities.**

COMMUNITY IMPACT

This project will **help bridge the gap in long-term care services in Ontario**, where the senior population is rapidly growing. It will enhance healthcare access and promote cultural inclusivity, ensuring that seniors feel respected and valued.

HOW YOU CAN HELP

- **Direct Donations:** Support our fundraising efforts through one-time or recurring donations.
- **Naming Rights:** Leave a lasting legacy by naming areas of the facility.
- **Peer-to-Peer Fundraising:** Call on your family, friends, and colleagues to donate to your campaign to raise funds for the LTC.

PROJECT HIGHLIGHTS

FACILITY FEATURES

- A state-of-the-art **192-bed** long-term care facility.
- Focus on culturally sensitive care for diverse backgrounds.

LOCATION

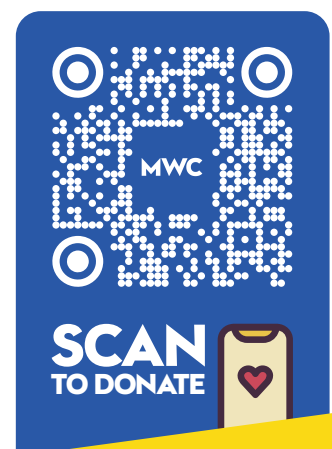
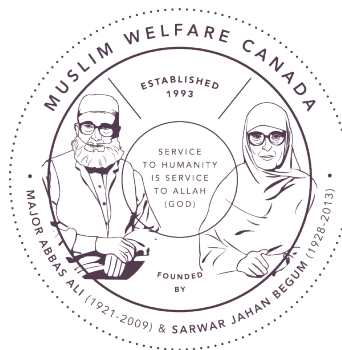
- Situated in **Courtice, Ontario**, the facility will be accessible and designed to foster community engagement.

TIMELINE

- **Due Diligence:** April 2022 - March 2023
- **Detailed Design:** April 2023 - November 2024
- **Construction:** December 2024 - August 2027

JOIN US

Your support is crucial in making this project a reality. **Together, we can create a legacy of care and compassion for our seniors.**



Serving Humanity Since 1993

DEMOGRAPHICS



1.8 MILLION

AGE: 55-64

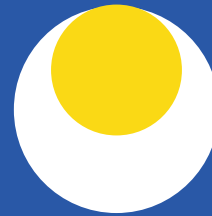


2.4 MILLION

AGE: 65+

2.7 MILLION

2021



4.4 MILLION

2046

Seniors are aging across Ontario with **older people outnumbering** younger people (2019)

Projected population of seniors by 2046

STATUS OF

LONG-TERM CARE HOMES

The average senior will wait **126 days** to access long-term care, with some waiting **up to 2.5 years**.



626

Licensed LTC homes in Ontario



48%

LTC homes are old and **need redevelopment** by 2025



40%

LTC homes have **less than 92 beds**



45K

Beds at LTC homes are **waitlisted**

☎ +1-866-754-3111

🌐 mwcanada.org/long-term-care

✉ info@mwcanada.org

For INTERAC e-transfer: donation@mwcanada.org
CRA Charity No. : 89733-1732-RR0001